

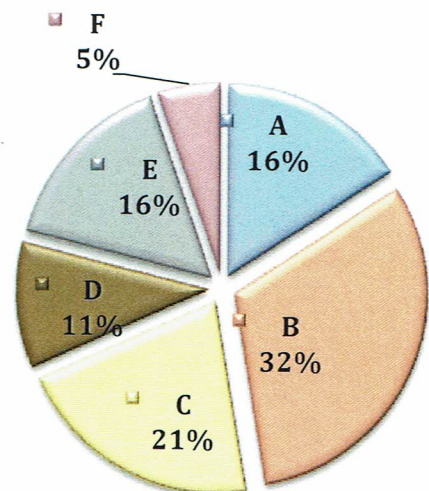
FEBRUARY 2019 PROPERTY CRIME STATISTICS

TOTAL PROPERTY CRIMES - 19 PROPERTY CRIME TYPES RESIDENTIAL / CONVEYANCE / BUSINESS	TIME OF OCCURRENCE			TYPE OF ENTRY		
	DAY	NIGHT	UNK	FORCED	NO FORCE	UNK
TOTAL: 12 RESIDENTIAL: Includes Single family homes, Apartments, Mobile Homes, Carport, Storage Sheds	33%	33%	33%	8%	92%	0%
TOTAL- 3 CONVEYANCE: Includes All Vehicles, Boats, and Trailers	33%	33%	33%	0%	100%	0%
TOTAL: 4 BUSINESS: Includes Businesses, Churches, Storage Facilities, and Schools	25%	0%	75%	88%	13%	0%

TOTAL PROPERTY CRIMES 2014-2019						
MONTH	2019	2018	2017	2016	2015	2014
JAN	10	18	27	16	21	31
FEB	19	11	15	15	24	21
MAR		35	15	22	29	42
APR		20	16	47	33	47
MAY		24	16	42	26	25
JUNE		7	24	33	21	29
JULY		26	20	21	17	22
AUG		24	39	24	18	36
SEPT		28	19	23	23	34
OCT		32	19	26	27	40
NOV		34	15	23	33	25
DEC		30	17	17	37	25
TOTAL	29	289	242	309	309	377

February 2019 Burglaries By Beats/Zones A-F

*Beat/Zone map on page 6



Does Neighborhood Watch Work?

✓ YES! In recent burglary cases, suspects were apprehended by the police as a direct result of neighbors who called the police to report suspicious activity in their neighborhood. In most cases, the victims recovered all of their stolen property!

Neighborhood Watch is one of the oldest and most effective crime prevention programs in the country. The program brings citizens and communities together, with law enforcement to deter crime and make communities safer.

For information on how to start a Crime Watch Group in your neighborhood, contact:

Crime Prevention Practitioner,
Lyn Bryan at 863-534-5034 or
email lbryan.pd@cityofbartow.net